

LA CONCHITA

LEARN. PREPARE. NEVER FORGET.

COMMUNITY TOWN HALL MEETING

JANUARY 21, 2026 - 6:30PM

Questions & Answers

- **Please ask questions! We want this to be interactive.**
- **Use the Q&A button on your Zoom screen to ask a question.**
- **We will be monitoring questions throughout the presentation. At the end of each presentation, Kim Dellacort from the Sheriff Emergency Services will ensure the questions are relayed to the panelist.**

PRESENTATION PANELIST



Rob Davidson
Captain
Ventura County Sheriff
Headquarters Station



Joe Williams
Division Chief
Special Operations
Ventura County Fire Department



Patrick Maynard
Director
Ventura County Sheriff
Emergency Services



Jim O'Tousa
Geologist
Ventura County Sheriff
Emergency Services



Scott Holder
Hydrologist
Ventura County Public Works Agency



Scott Holder
Hydrologist
Ventura County Public Works Agency

Local Rain Gauges



Shaffer Ranch

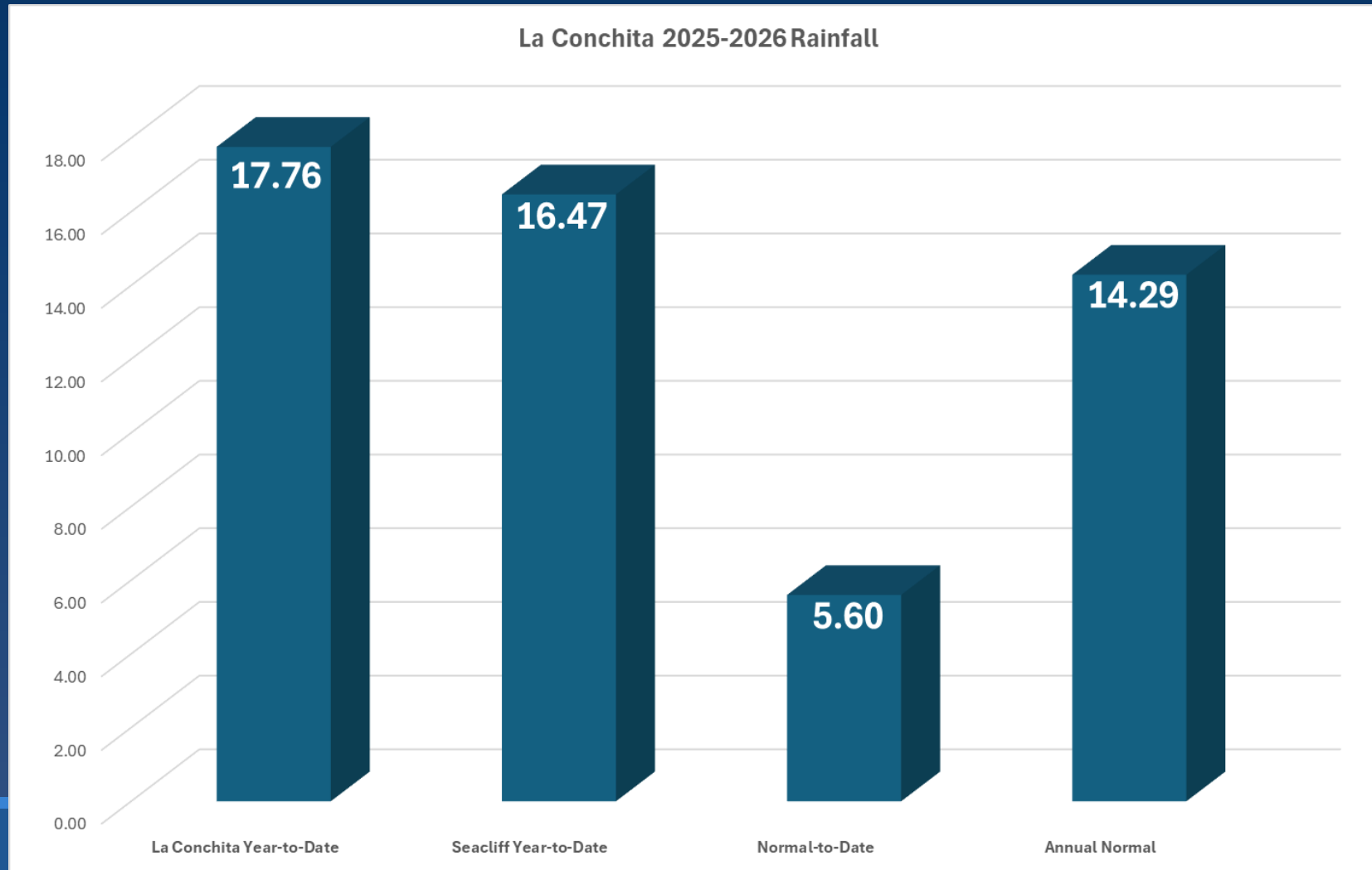
Located on the bluff directly above the Community of La Conchita



VCFD Fire Station 25

Located to the North of the Fire Station

Current Year-to-Date Rainfall





Jim O'Tousa

Geologist

Ventura County Sheriff Emergency Services

Slope Failure Hazards

Based on the 1995 and 2005 landslides, the following geologic hazards are present:

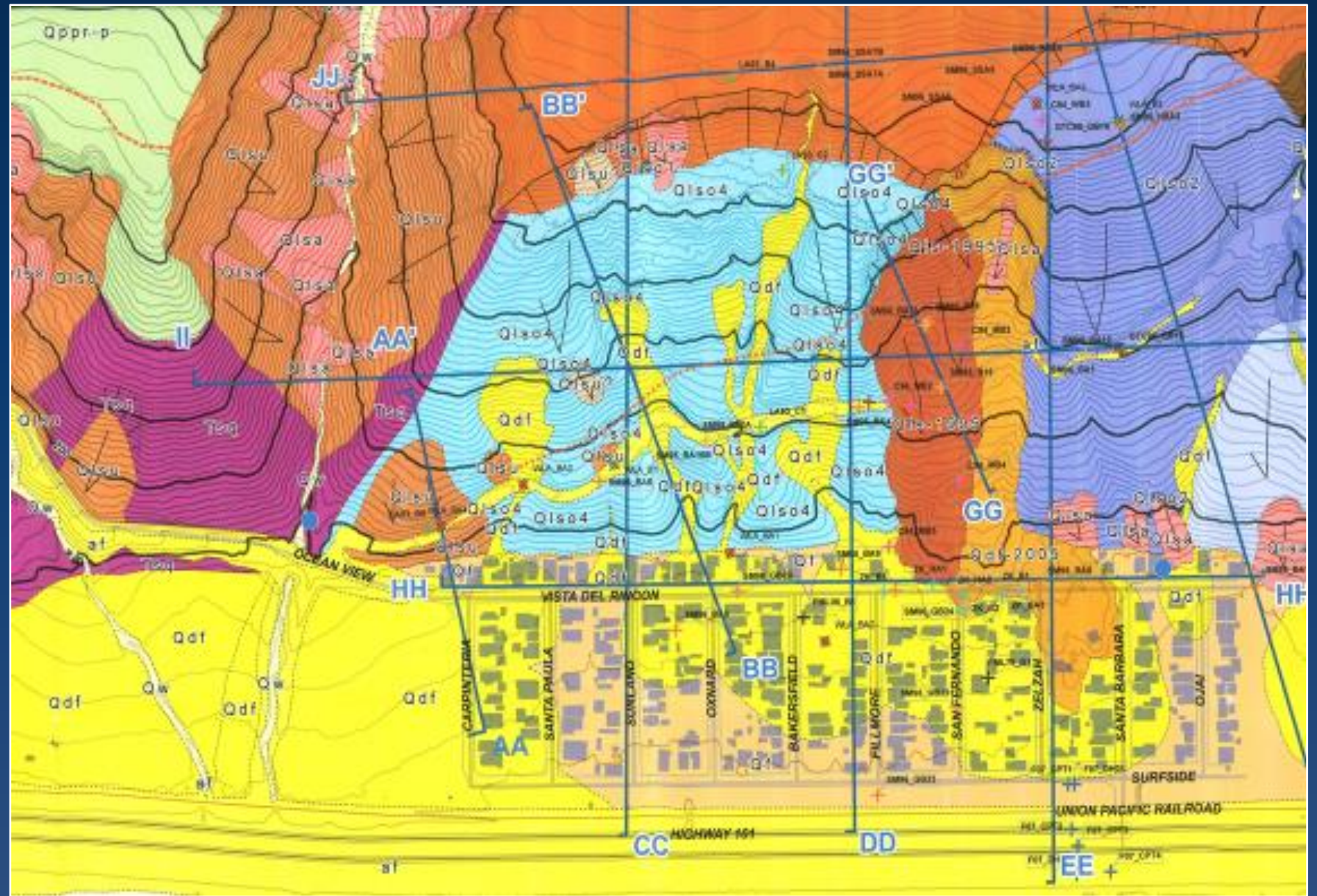
Catastrophic Failure: A large, ancient landslide mass located above the community could potentially fail at any time, without warning, and impact residences within the community.

Debris Flows: Debris flows could potentially impact all residences and access roads within the community.

Combined Catastrophic Failure and Debris Flows: If both events were to occur simultaneously, the community could experience significant impacts.

No excavation, removal of earth material, or grading should be performed within the community without recommendations from a licensed geologist and or geotechnical engineer, and review by the County of Ventura Public Works Agency.

Geologic Map

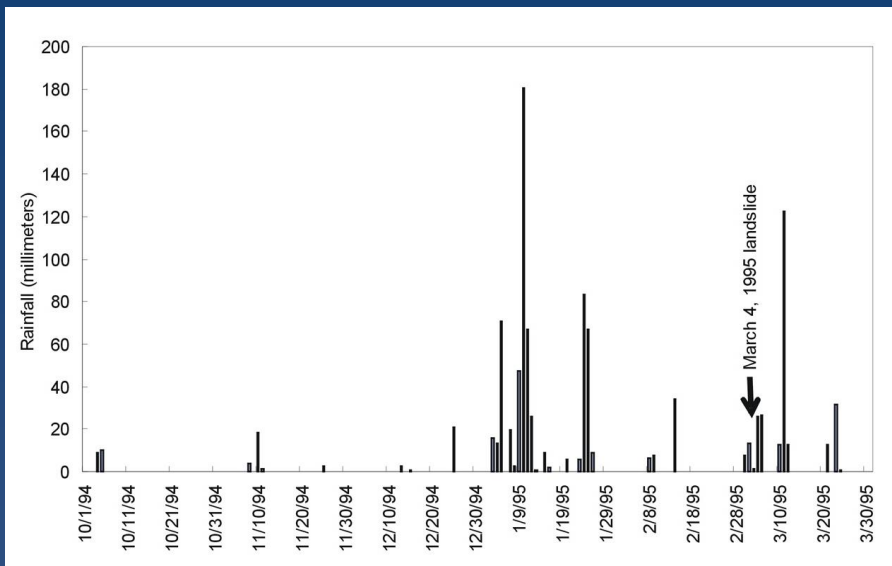


1995 Landslide

Deep Seated Event

- Occurred March 4, 1995, 2:03 PM
- Covered 10 Acres
- Damaged 9 Homes
- No Fatalities

The Landslide occurred two months after the area received 15 inches of rainfall in the month of January

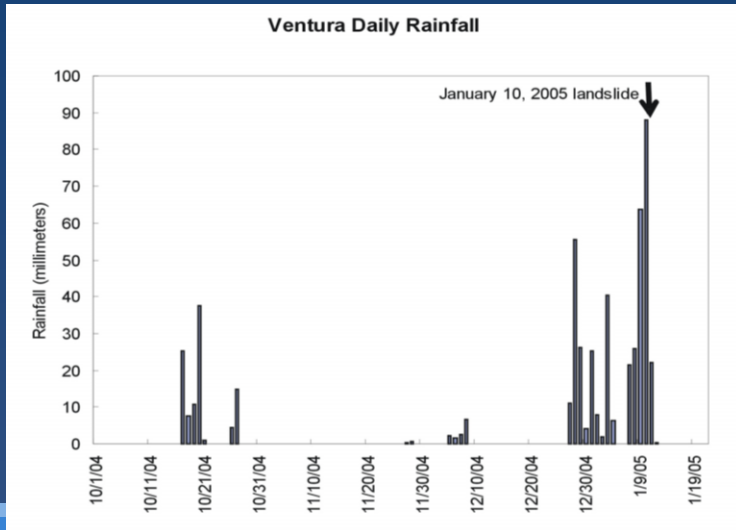


2005 Landslide / Debris Flow

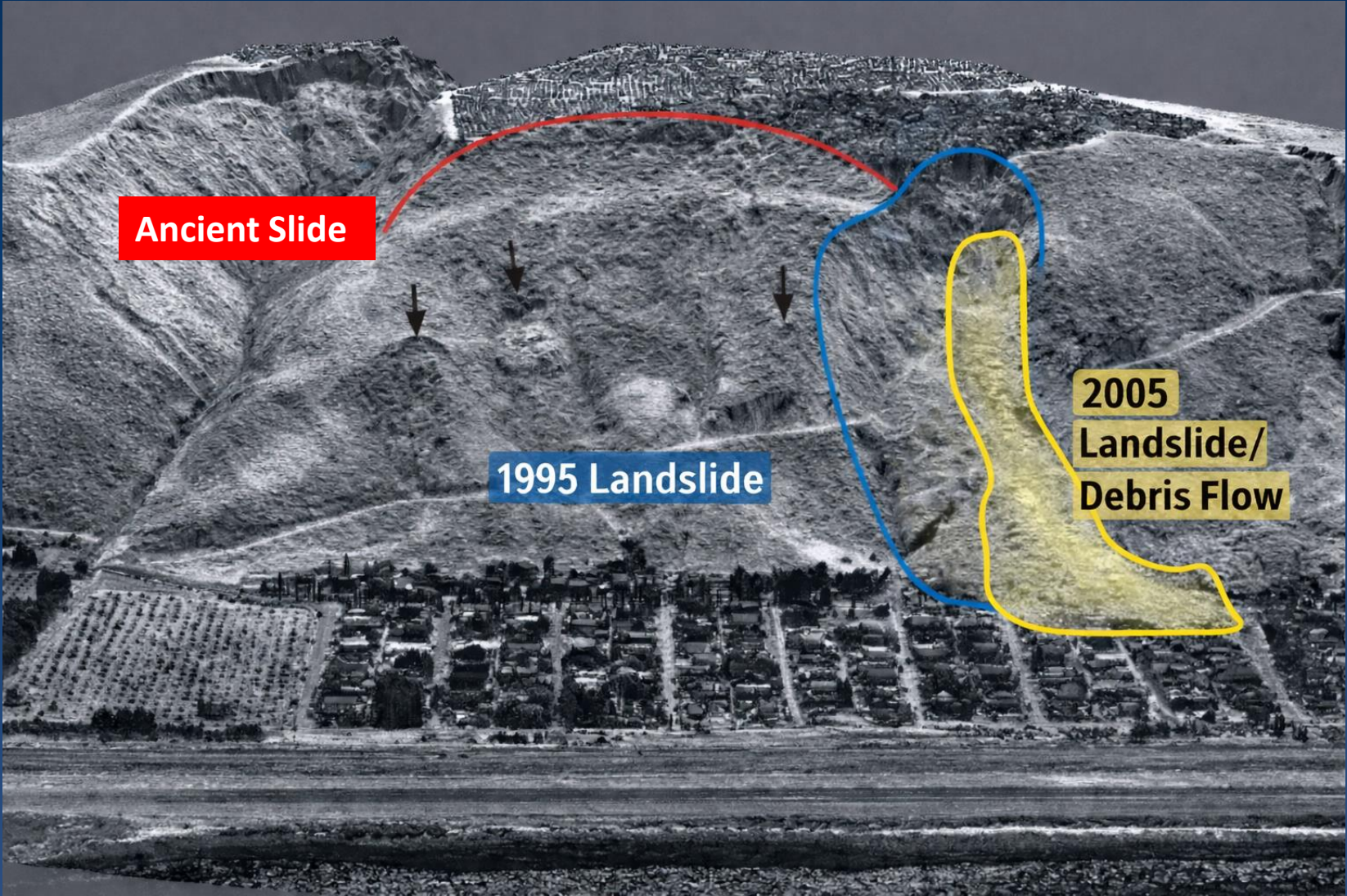
Dual-Action Event

- **January 10, 2005, 12:30 PM**
- **Covered 8 Acres**
- **Destroyed 13 Homes**
- **Damaged 23 Homes**
- **10 Fatalities**

The Debris flow occurred after the area received 8 inches of rainfall in a two-week period.



Slide Source for Both Events



Soil Slips



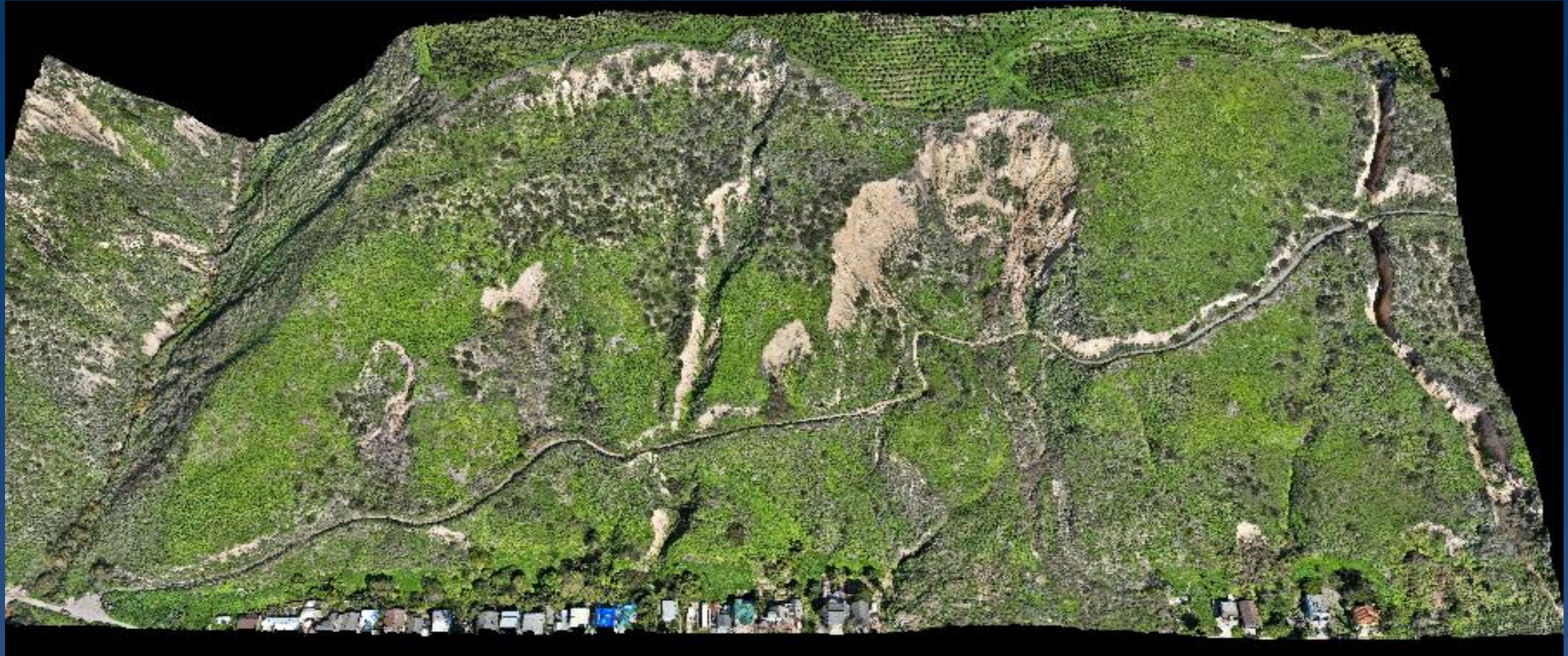
Soil Slips occur during or shortly following rain intensities that exceed 1 inch or more per hour

Small Debris Flows



Soil Slips occur during or shortly following rain intensities that exceed 1 inch or more per hour

VIEW OF HILLSIDE - TAKEN JANUARY 12, 2026





Patrick Maynard

Director

Ventura County Sheriff Emergency Services

Historical Event Triggers

The following historical triggers were encountered in La Conchita and help to serve as indicators for a potential geological event:

15" of rainfall in 30 days or less

- The 1995 La Conchita Landslide occurred two months after the area received approximately 15" of rainfall over a 30-day period. Ground cracks, bulging and sloughing at the toe of the slope were also observed several months prior to this failure.

8" of rainfall in any two-week period

- The 2005 landslide occurred at the culmination of a wet 2-week period of rainfall where approximately 8" of rain fell.

1" of rainfall per hour or greater carries the potential to trigger flooding, landslides or debris flows at any location.

- A small landslide impacted on property in December 2010 following a storm that produced rain at a rate of 1" per hour.

La Conchita - Geological Hazard Zone

Why has La Conchita been Declared a Geological Hazard Zone?

- Due to the complex and evolving nature of the geologic hazards in La Conchita, public safety officials cannot reliably predict when a hillside failure may occur.
- Alerts may not always provide sufficient advance notice. For this reason, the Community of La Conchita is under a year-round **EVACUATION WARNING**.

What is an Evacuation Warning?

- The threat to lives is **NOT YET IMMINENT**.
- Due to the potential for rapidly changing conditions to develop into a serious threat, residents are advised to prepare to leave the area immediately.
- Residents are strongly encouraged to closely monitor weather forecast, rainfall rates and remain alert to any signs of instability or potential failure.

La Conchita - Geological Hazard Zone

WARNING

GEOLOGICAL HAZARD ZONE EVACUATION WARNING IN EFFECT

PUBLIC SAFETY AGENCIES CANNOT PREDICT WHEN A LANDSLIDE OR DEBRIS FLOW MAY OCCUR. RESIDENTS AND VISITORS SHOULD CLOSELY MONITOR WEATHER CONDITIONS, RAINFALL TOTALS, AND VISIBLE CHANGES TO THE HILLSIDE, AND LEAVE THE AREA IMMEDIATELY IF THEY FEEL UNSAFE. DUE TO THE ONGOING RISK OF HILLSIDE FAILURE, THIS AREA IS UNDER A YEAR-ROUND EVACUATION WARNING

VISIT VCEMERGENCY.COM FOR MORE INFORMATION

How We Monitor the Hillside

A person is shown from behind, flying a drone over a hillside. The drone is in the air, and the person's arms are extended. The background is a blurred view of a hillside with some vegetation.

Visual Monitoring

- Periodic field observations by public safety and public works personnel using drones
- Ongoing visual awareness and review of known scarps, cracks and historic slide paths

Weather & Rainfall Tracking

- Continuous monitoring of rainfall totals, intensity and duration
- Focus on storms that exceed historical thresholds associated with past failures

Post-Storm Assessments

- Targeted inspections following significant rain events to continuously monitor for changes

Interagency Coordination

- Information sharing between Sheriff's Emergency Services, VC Public Works, VCFD and Geotechnical Experts.
- Emphasis on life safety due to the unpredictable nature of slope failures

Evacuations & Notifications

La Conchita Remains a Geological Hazard Zone

- A failure can occur at any time, rain or shine.

Do Not Wait for Official Notification to Leave

- Even with our understanding of past events, we have no way to determine if or when a failure will occur.

When Will the Sheriff's Office Issue an EVACUATION ORDER?

- Your home is under a year-round **EVACUATION WARNING**.
- The Sheriff's Office will issue an **EVACUATION ORDER** only if there are signs of significant cracking, bulging, or other conditions indicating that a catastrophic failure is imminent.

Staying Informed

VC Alert

- Mass notification system operated by the Ventura County Sheriff's Office. This system is frequently used to share information with the La Conchita Community.

VCEmergency.com

- Website operated by the Ventura County Sheriff's Office in coordination with all other agencies.
- Page dedicated to La Conchita that includes historical thresholds, a video of this presentation and real-time rain totals for the community.

Monitor Conditions Near Your Home

- Look for new cracks / bulges / significant increase in mud and/or debris on streets.
- Monitor hillside conditions not just during rain events but year-round.
- Should you see any significant changes in the hillside, call 911 to report it.



Joe Williams
Division Chief
Ventura County Fire Department



Rob Davidson

Captain

Ventura County Sheriff's Office - Headquarters Station



LEARN. PREPARE. NEVER FORGET.